

T.E.S.T., Inc. Tech Talk

Greetings from T.E.S.T.

T.E.S.T. is very excited to introduce many new and exciting products in this issue of Tech Talk!

T.E.S.T. is committed to helping educators evaluate, integrate and use educational technology to empower students to discover new understanding and attain individual success. We have been the leader in providing instructional technology tools, support and training to Montana K-12 schools for 12 years! Our research-based products can enhance student engagement, increase motivation, promote new learning styles including special needs students, support content review and retention, and effectively assist with teacher preparation. T.E.S.T. represents a handful of products and provides a variety of professional development and support services.

Sincerely,
 Liz Cunningham
 T.E.S.T., Inc.

T.E.S.T. Training/Bundle Offers:

February 7 — SMART Board Basics Notebook Software

February 8 — SMART Document Camera

February 9 — SMART Notebook Math Tools

February 10 — SMART Response

All workshops are held at the T.E.S.T. Training Facility
 2120 Ernest Ave
 Missoula, MT.

[Click here for T.E.S.T. 2011 Winter Training/Bundle Offers schedule & options](#)

Introducing a “New Class” of SMART Board—800 Series

The new **800 Series SMART Boards** support multiuser writing and common multitouch gestures.



Truly collaborative learning

With the new 800 series, two users can work on a lesson at the same time, anywhere on the interactive whiteboard. Each user can use a finger or a pen to simultaneously write, draw and manipulate content in SMART Notebook™ collaborative learning software. The system doesn't require a separate multiuser mode, so teachers can enable collaboration instantly. A user can also write with a pen, erase with a palm and move objects with a finger.

More magical moments

The simple, intuitive touch gesture capabilities of the 800 series make it easy to toss, rotate or zoom in on lesson content, or control applications in Windows® 7 or Snow Leopard operating systems. A user can also independently write with a pen, erase with a palm or move objects with a finger – no need to access on-screen menus.

Model SB885ix

As part of the 800 series, the 885ix represents a new class of interactive whiteboard. The system features a new powerful 885 SMART Board interactive whiteboard, the SMART UX60 ultra-short-throw projector, an extended control panel and a modular Pen Tray. This combination delivers a precise and intuitive touch

experience along with stunning image quality and an interactive widescreen surface for teaching and learning. And because it's an integrated system, it's easy to control and manage your classroom technology.



[Click here to watch the video!](#)

Education Introductory Offer: SB885ix \$4,899 w/ FREE S/H (offer ends 3/31/11)

“Some succeed because they are destined to, but most succeed because they are determined to.”
 ~unknown

A SMART Board without a projector? . . . Introducing the SB6052i!



Education Introductory Offer: SB6052i \$5,949 w/ FREE S/H (offer ends 3/31/11)

The SMART Board 6052i interactive display is a touch-enabled LCD display designed to give access to digital materials in meetings and make interacting with notes a more intuitive and engaging experience. The 6052i combines a professional-grade LCD display with SMART's DVIT™ (Digital Vision Touch) technology to give a large, high-quality display that can easily operate using a finger or the pencil tool. This widescreen, projector-free system also supports HD and eliminates shadows, improving both the visibility and impact of notes and visuals.

Improve efficiency

With the 6052i, it's easy to collaborate, build consensus and compile information. Access digital files, applications and resources using the large, interactive display. Open and write in Microsoft® Word and PowerPoint®, and on other commonly used applications, with digital ink. And save notes in one file, complete with digital markups. E-mail files from the interactive display or save them to a USB drive to share later.

Experience touch

The 6052i features SMART's award-winning DVIT technology, enabling note writing or interact with applications without special tools. Use a finger as a mouse, and touch gestures to scroll through documents and zoom in on objects. The touch experience is intuitive and precise, so the learning curve is minimal. Either use a finger or the pencil tool to interact with information – the display will recognize both. There's no need to access other tools, buttons or on-screen menus.

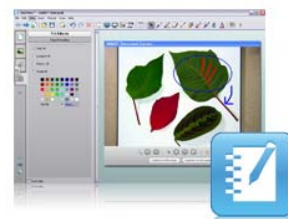
Every student can learn, just not on the same day, or the same way.
 ~George Evans

SMART Document Camera 330 Instantly create and share content with students

The SMART Document Camera uses a high-resolution video camera to display clear and detailed images in real time.



Integration with **SMART Notebook software** enables images to be transformed into interactive content anytime during a lesson helping students stay interested and attentive. The SMART Document Camera comes with the latest version of SMART Notebook, allowing access and control of the document camera directly from a menu inside the software. There's also a button on the document camera itself that allows the capture of images directly to SMART Notebook software.



Easily add interactivity to learning



With the SMART Document Camera, keep students engaged by easily creating interactive learning opportunities in the classroom. Imagine the convenience of viewing a science experiment in real time with the entire class or displaying a book highlighting key sections. It's also easy to let students share objects or schoolwork with the class.

Ready for Mixed Reality



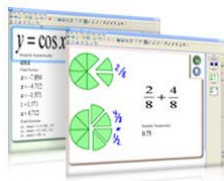
Mixed reality offers an innovative way to foster deeper engagement and understanding by enabling a class to interact with 2D, 3D, animated and audio-enriched content. When our education-specific mixed reality content becomes available in summer 2011, display using the SMART Document Camera while actively manipulate and explore the enriched content on a **SMART Board interactive whiteboard**.

[CLICK HERE](#) to learn more about **mixed reality**.

[CLICK HERE](#) to view "2011 Winter Training/Bundle Offers" schedule & options.

SMART Notebook Math Tools

Create, explore and evaluate math concepts with SMART Notebook™ Math Tools. This add-on to SMART Notebook collaborative learning software combines all the tools needed to teach math concepts and solve equations in a single application. It keeps everything at the fingertips, incorporating shapes, measurement tools, graphs and tables easily into lesson activities.



SMART Response



PE



LE



XE



CE

The SMART Response interactive response system is available in 4 unique models to suit a variety of learning environments, such as 1:1, K-12, early education, special needs and advanced math and science. Each model gives teachers the ability to instantly track quiz results and lesson comprehension to gain immediate insight into student learning and help increase overall retention and engagement.

satalight®

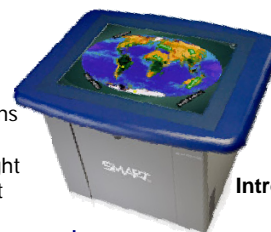
HD Introductory Price: \$8,295*+S/H
 *FREE Laptop Arm included (\$299 value) until 3/31/11



The satalight®-HD is the newest interactive touch screen workstation for special needs use. Touch screens are commonly used in special education classrooms, because "direct selection" is user intuitive. The satalight products offer large display touch, either in the HD flat panel format, or the original SMART Board format.

The satalight-HD is ADA-compliant, for use with students who use wheelchairs. An optional switch interface is available. Low incidence individuals who can make use of the satalight, include those with orthopedic impairments, moderately and severely cognitively disabled, autism spectrum disorder, visually impaired, traumatic brain injury or stroke victims. Unintended touch is a feature of the satalight-HD, where a user can rest one hand on the monitor's surface and use their other hand to manipulate software objects.

In some situations, the regular satalight® interactive workstation may be a better fit for students needs. The regular satalight has better touch sensitivity, excellent edge and corner sensitivity, more intuitive sensitivity when changing mouse directions, a larger 4:3 aspect ratio work/image surface, tighter sealed beveled edges, and can withstand the most impact force on the surface.



SMART Table

Introductory Price: \$5,995+S/H
 (offer ends 3/31/11)

The SMART Table interactive learning center is the first multitouch, multiuser table for early education students. Designed to encourage collaboration, consensus building and problem solving, the SMART Table gives students a gathering place to explore digital lessons, play educational games and work together on interactive learning activities. Groups of students can simultaneously touch objects on the surface, which is intuitive for young students, so they can get started on activities quickly and easily and have fun while they learn. Plus, the SMART Table is durable enough for even the most enthusiastic jolts and bumps.